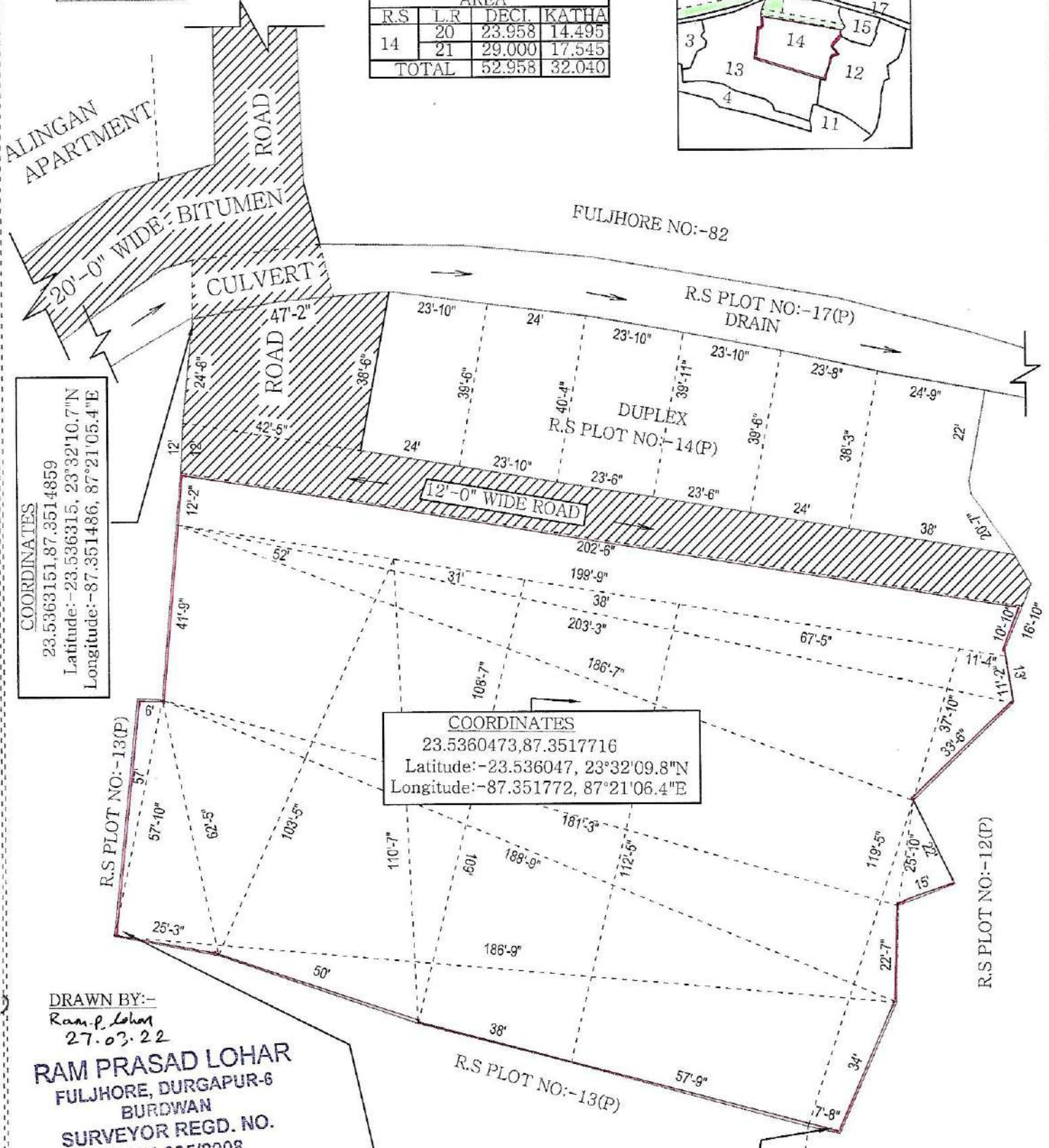
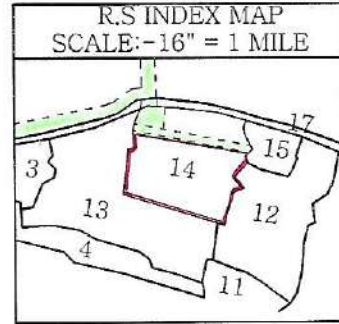


SKETCH PLAN OF R.S PLOT NO :-14(P),L.R PLOT NO:-20 & 21,  
 OF MOUZA:-SANKARPUR, J.L NO:-95,& 109,  
 P.S:-FARIDPUR,(N.T.P.S), DIST:-PASCHIM BARDHAMAN,  
 AREA:-52.958 DECIMAL SHOWING IN RED COLOUR,  
 OWNER:-SADAN INFRASTRUCTURE.

SCALE:-160" = 1 MILE

32.040 KATHA.

AREA			
R.S	L.R	DECL	KATHA
14	20	23.958	14.495
	21	29.000	17.545
TOTAL		52.958	32.040



**COORDINATES**  
 23.5363151,87.3514859  
 Latitude:-23.536315, 23°32'10.7"N  
 Longitude:-87.351486, 87°21'05.4"E

**COORDINATES**  
 23.5360473,87.3517716  
 Latitude:-23.536047, 23°32'09.8"N  
 Longitude:-87.351772, 87°21'06.4"E

**DRAWN BY:-**  
 Ram. P. Lohar  
 27.03.22  
**RAM PRASAD LOHAR**  
 FULJHORE, DURGAPUR-6  
 BURDWAN  
 SURVEYOR REGD. NO.  
 W.B./K-635/2008  
 M-8293423795

**COORDINATES**  
 23.5359290,87.3514306  
 Latitude:-23.535929, 23°32'09.3"N  
 Longitude:-87.351431, 87°21'05.2"E

**COORDINATES**  
 23.5357916,87.3519110  
 Latitude:-23.535792, 23°32'08.9"N  
 Longitude:-87.351911, 87°21'06.9"E